

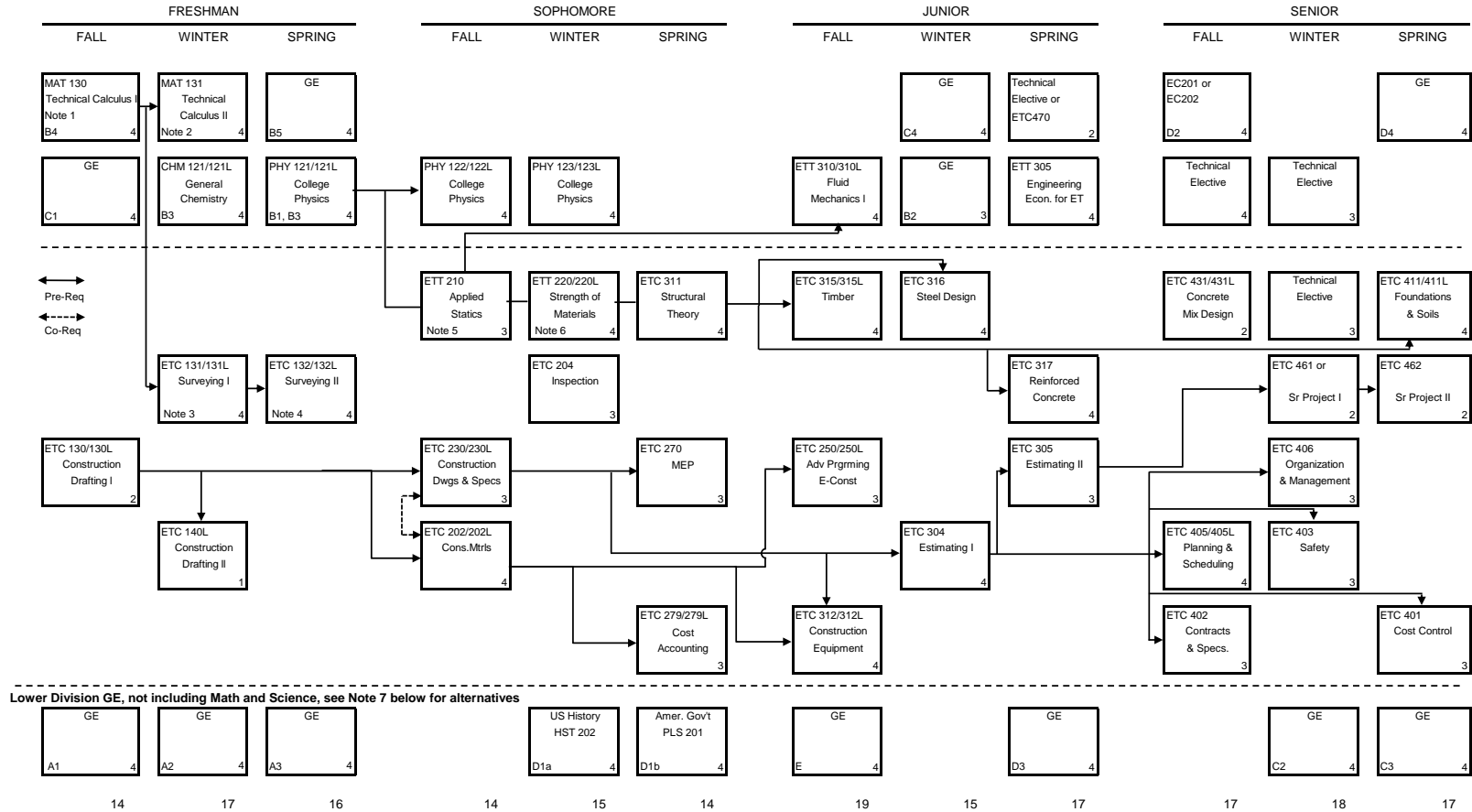
**CALIFORNIA STATE POLYTECHNIC UNIVERSITY, POMONA  
CONSTRUCTION ENGINEERING TECHNOLOGY**

**CURRICULUM FLOWSHEET**

2017-18

NAME: \_\_\_\_\_

Academic Plan: ETC



Notes

- MAT 114 and MAT 115 may be substituted for MAT 130.
- MAT 114, MAT 115, and MAT 116 may be substituted for MAT 130 and MAT 131.
- CE134/134L may be substituted for ETC131/131L.
- CE 220/220L may be substituted for ETC132/132L.
- ME 214 may be substituted for ETT 210.
- ME 218 may be substituted for ETT 220.
- An alternative GE pattern from that listed here, the Interdisciplinary Education Program (IGE), for partial fulfillment of GE Areas A, C and D is available for students in this major.  
Although the IGE program tends to fit best for freshmen entering Cal Poly Pomona, it is available to all students; see the university catalog or your advisor for more information.

Revised 06/13/2017

Total Units 193

- This flowchart shows the suggested order of courses to complete the degree Bachelor of Science in Construction Engineering Technology in 4 years: 12 quarters not including summer quarters.
- The flowchart is not a schedule however and when specific courses are offered (i.e. what quarter in a given year) depends on many factors including enrollment, faculty availability, on-going curricular changes and budgetary constraints.
- Many courses (i.e ETT210 and GE) are generally taught every quarter and can be taken whenever a student has completed the prerequisite coursework.
- Most major courses (i.e ETC130/130L) may be taught once or twice a year depending on student demands.
- If you have concerns about when a course is to be offered next or any other course related questions you should contact your department advisor or the CE office (909-869-2488 or ce@cpp.edu).